

AQUARIUM INSTRUCTIONS FOR USE For Household Use Only

KEEP THESE INSTRUCTIONS FOR
FUTURE REFERENCE



Aquarium Kit AP360-6FFP



Scan QR Code for Video
"How to Set Up Your Freshwater Aquarium"

Children under the age of 13 should be supervised by an adult with the setup, maintenance and fish care

ISZ-360-6FFP COPYRIGHT © 2022

1. Your Aquarium

People of all ages enjoy looking at aquariums. Aside from the belief that an aquarium is beautiful, many also believe owning an aquarium can be relaxing, rewarding and a great conversation piece all at the same time. You will find you will have many enjoyable hours with your new aquarium and fish.

Included in your
Aquarium Kit

1. 6G Fish Tank
2. Full Hood
3. Power Supply
4. LED Light
5. Power Filter
6. Filter Cartridge*



*Power filter uses Koller Products® Small Size replacement filter cartridges (AQ10FC-60)

4. Rinsing Gravel and Decor

Rinse aquarium, filter, stones, plastic plants, and other decorations under running tap water. Place gravel in a colander or new bucket and rinse under running tap water until water runs clear. Never clean aquarium, decorations, or filter with household soaps as they can harm your fish.



*Gravel and Decorations
not included with aquarium kit

2. Important Instructions

Read This Section before operating this unit. **For Household Use Only.** Confirm your tank has not been damaged during shipping before you start the setup process. Completely install aquarium before operating. To avoid the unit plug or receptacle from getting wet, position the tank and stand to one side of a wall mounted receptacle to prevent water from dripping onto it.

A "Drip Loop" should be made as shown at right

DRIP LOOP

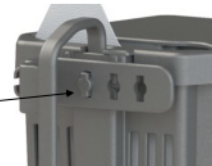


5. Installing Power Filter

Locate the adjustable hanger bracket inside the box. Place the hanger bracket at 90° and align one of the adjustment holes onto the mounting post, rotating it upwards until hanger is vertical. Install the filter inside the aquarium by hanging the filter onto the aquarium rim.

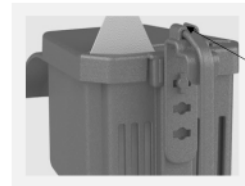
①

PLACE HANGER BRACKET AT 90 DEGREES ON POST



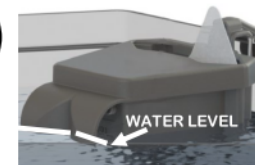
②

ROTATE HOOK VERTICAL, INSERTING POWER CORD INTO CORD HOLDER ON TOP OF HANGER BRACKET



③

MAINTAIN WATER LEVEL AT ALL TIMES AT THE RECOMMENDED WATER LEVEL LINE ON FILTER



3. Tank Placement

Leave enough space in back of the aquarium to allow easy access to the filter and various electrical cords from the electrical equipment.

Good places for your aquarium

- On a table or aquarium stand that's capable of bearing the weight of your filled aquarium.

Places to avoid

- Near direct sources of sunlight (e.g. windows), unwanted algae growth may occur.
- Near direct sources of heat or air conditioning (e.g. radiator, forced air vent).
- Around sources of noise (e.g. stereo speakers, TV).
- Drafty areas.
- Do not place aquarium on any good surface that can be damaged by water.
- Where water can come in contact with other electrical appliances.



6. Adding Water

Fill the aquarium with water to within two inches from the top of the tank. Treat water with a tap water conditioner to remove chlorine and chloramines from tap water that can be harmful to your fish. Confirm water temperature in aquarium has reached room temperature before adding fish.



Room
Temperature



7. LED Light

- To turn on LED light press the blue button switch on top of the light.
- Continue to press the blue button until desired color is located. Timer can be set to 2H, 4H or Continuous On.
- Seven colors to choose from: Daylight White, Blue, Green, Red, Aqua, Purple, and Amber.



Includes Koller Products Power Supply 5V .

- Insert Micro-B connector into back of LED light port.
- Plug opposite end of USB cord connector into Power Adapter.
- Insert Power Adapter into electrical outlet.



8. Optional Heater

- Select proper sized heater appropriate for your aquarium size.
- Read and follow the heater's instructions.
- Check with your retailer for recommended heater settings.
- Adjust heater settings as directed.
- Confirm water temperature with thermometer.
- Always use a power strip with surge protector to safeguard your electrical equipment.



Heater and Thermometer not included, must be purchased separately

9. Introducing Fish

1. Float the bag with your fish on the surface of the aquarium for 15 minutes. You'll have to remove some water from your aquarium as the water level may rise when floating bag, keep this water as you will use it to refill your aquarium to 1 inch from top of tank.
2. Open the bag containing your new fish, taking care that the bag does not collapse, adding a little aquarium water every two minutes directly to bag.
3. Continue this process for 10 minutes, allowing the bag to fill with water.
4. Take bag with fish to sink and gently scoop fish out with a net or pour bag of water into net. Gently place fish into aquarium. Do not add water from fish bag in order to prevent introduction of possible disease or parasites from store water.

10. Ongoing Maintenance

Perform a 25% water change monthly, more frequently if necessary depending on number of fish and amount of daily feedings, use a vacuum gravel cleaner to thoroughly remove any uneaten food and waste buildup.

To keep filter running optimally replace Koller Products S cartridge (AQ10FC-60) every 3 to 4 weeks, depending on the number of fish and amount of daily feedings, or when reduced filter flow.

Test pH, ammonia and nitrite weekly. Performing these tests will allow you to monitor the water quality of your aquarium. If readings are not in the preferred range, perform a partial water change.

For additional information please scan QR code to the right



LED LIGHT FCC COMPLIANT



FCC Verification Tested
Certificate Of Conformity
PRSZ20082801E

This device complies with part 15 of the FCC Rules. Operation is subject to the following two conditions: (1) This device may not cause harmful interference, and (2) this device must accept any interference received, including interference that may cause undesired operation. Changes or modifications not expressly approved by the party responsible for compliance could void the user's authority to operate this device.

NOTE: This equipment has been tested and found to comply with the limits for a Class B digital device, pursuant to part 15 of the FCC Rules. These limits are designed to provide reasonable protection against harmful interference in a residential installation. This equipment generates, uses, and can radiate radio frequency energy and, if not installed and used in accordance with the instructions, may cause harmful interference to radio communications. However, there is no guarantee that interference will not occur in a particular installation. If this equipment does cause harmful interference to radio or television reception, which can be determined by turning the equipment off and on, the user is encouraged to try to correct the interference by one or more of the following measures:

- Reorient or relocate the receiving antenna.
- Increase the separation between the equipment and receiver.
- Connect the equipment into an outlet on a circuit different from that to which the receiver is connected.
- Consult the dealer or an experienced radio/TV technician for help.

LIMITED WARRANTY

KOLLER PRODUCTS LLC warrants this aquarium product to be free from defects in material and workmanship under normal use and service and according to the provisions as specified in the accompanying assembly and operating instructions, for a period of 1 year from date of purchase.

This warranty does not cover and KOLLER PRODUCTS LLC is not liable for the cost of repair or replacement of parts which have been subject to misuse, negligence, accident, improper installation, damage during shipment or handling, normal deterioration due to wear and exposure or defects caused by unauthorized parts or modification.

UNDER NO CIRCUMSTANCES WILL KOLLER PRODUCTS LLC BE LIABLE FOR ACCIDENTAL OR CONSEQUENTIAL DAMAGES, INCLUDING BUT NOT LIMITED TO LOSS OF PROPERTY OR EQUIPMENT.

Some states do not allow the exclusion or limitation of incidental or consequential damages, or limitation on how long an implied warranty lasts, so the above limitations or exclusions may not apply to you. This warranty gives you the legal rights, which vary from state to state.

**WARRANTY HELP
REPLACEMENT PARTS
OR TECH SUPPORT
IF ANY COMPONENTS ARE
DAMAGED OR MISSING
DO NOT RETURN TO RETAILER**

PLEASE CONTACT:
customerservice@sunnywaycn.com

SUNNYWAY ENTERPRISES INC
Tustin, CA 92782

Made in China