

## LED LIGHT FCC COMPLIANT



FCC Verification Tested  
Certificate Of Conformity  
# PRSZ18052305E

This device complies with part 15 of the FCC Rules. Operation is subject to the following two conditions: (1) This device may not cause harmful interference, and (2) this device must accept any interference received, including interference that may cause undesired operation. Changes or modifications not expressly approved by the party responsible for compliance could void the user's authority to operate this device.

NOTE: This equipment has been tested and found to comply with the limits for a Class B digital device, pursuant to part 15 of the FCC Rules. These limits are designed to provide reasonable protection against harmful interference in a residential installation. This equipment generates, uses, and can radiate radio frequency energy and, if not installed and used in accordance with the instructions, may cause harmful interference to radio communications. However, there is no guarantee that interference will not occur in a particular installation. If this equipment does cause harmful interference to radio or television reception, which can be determined by turning the equipment off and on, the user is encouraged to try to correct the interference by one or more of the following measures: -Reorient or relocate the receiving antenna. - Increase the separation between the equipment and receiver. -Connect the equipment into an outlet on a circuit different from that to which the receiver is connected. -Consult the dealer or an experienced radio/ TV technician for help.

## LIMITED WARRANTY

SUNNYWAY ENTERPRISES INC warrants this aquarium product to be free from defects in material and workmanship under normal use and service and according to the provisions as specified in the accompanying assembly and operating instructions, for a period of 1 year from date of purchase.

This warranty does not cover and SUNNYWAY ENTERPRISES INC is not liable for the cost of repair or replacement of parts which have been subject to misuse, negligence, accident, improper installation, damage during shipment or handling, normal deterioration due to wear and exposure or defects caused by unauthorized parts or modification.

**UNDER NO CIRCUMSTANCES WILL SUNNYWAY ENTERPRISES INC BE LIABLE FOR ACCIDENTAL OR CONSEQUENTIAL DAMAGES, INCLUDING BUT NOT LIMITED TO LOSS OF PROPERTY OR EQUIPMENT.**

Some states do not allow the exclusion or limitation of incidental or consequential damages, or limitation on how long an implied warranty lasts, so the above limitations or exclusions may not apply to you. This warranty gives you the legal rights, which vary from state to state.

**WARRANTY HELP, REPLACEMENT PARTS, OR TECH SUPPORT, IF ANY COMPONENTS ARE DAMAGED OR MISSING DO NOT RETURN TO RETAILER**

**PLEASE CONTACT:**  
[customerservice@sunnywaycn.com](mailto:customerservice@sunnywaycn.com)

Manufactured by SUNNYWAY  
ENTERPRISES INC, Tustin, CA 92782

# SW PRODUCTS

## AQUARIUM SET UP INSTRUCTIONS

Item: AP30000GB



For Household Use Only  
Children under the age of 13 should be supervised by an adult with the setup, maintenance and fish care

## 1. Your Aquarium

People of all ages enjoy looking at aquariums. Aside from the belief that an aquarium is beautiful, many also believe owning an aquarium can be relaxing, rewarding and a great conversation piece all at the same time. You will find you will have many enjoyable hours with your new aquarium and fish.

Included in your Aquarium Kit

1. 3G Fish Tank
2. LED Light
3. Full Hood
4. USB Cord



## 2. Important Instructions

Read This Section before operating this unit. For Household Use Only. Confirm your tank has not been damaged during shipping before you start the setup process. Completely install aquarium before operating. The LED unit is powered by 2 AA batteries or by SW Products Power Adapter 5V 150mA (AQ51000), neither are included in this kit. To avoid the unit plug or receptacle from getting wet, position the tank and stand to one side of a wall mounted receptacle to prevent water from dripping onto it.

A "Drip Loop" should be made as shown at right

**DRIP LOOP**



## 3. Tank Placement

Leave enough space in back of the aquarium to allow easy access to the filter and various electrical cords from the electrical equipment.

### Good places for your aquarium

On a table or aquarium stand that's capable of bearing the weight of your filled aquarium.

### Places to avoid

- Near direct sources of sunlight (e.g. windows), unwanted algae growth may occur.
- Near direct sources of heat or air conditioning (e.g. radiator, forced air vent).
- Around sources of noise (e.g. stereo speakers, TV).
- Drafty areas.
- Do not place aquarium on any good surface that can be damaged by water.
- Where water can come in contact with other electrical appliances.

## 4. Rinse Gravel and Decor

Rinse aquarium, filter, stones, plastic plants, and other decorations under running tap water. Place gravel in a colander or new bucket and rinse under running tap water until water runs clear. Never clean aquarium, decorations, or filter with household soaps as they can harm your fish.



\*Gravel and Decorations not included with aquarium kit

## 5. Adding Water

Fill the aquarium with water to within two inches from the top of the tank. Treat water with a tap water conditioner to remove chlorine and chloramines from tap water that can be harmful to your fish. Confirm water temperature in the aquarium has reached room temperature before adding fish.



## 6. LED Light

1. To turn on LED light press the blue button switch on top of the light.
2. Continue to press the blue button until desired color is located.
3. There are seven colors to choose from: Daylight White, Blue, Green, Red, Aqua, Purple, and Amber.

### WARNING:

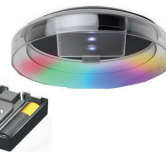
- Do not mix old and new batteries
- Do not mix Alkaline, Standard or Rechargeable Batteries
- LED light uses 2 AA batteries or 5V Power Adapter (sold separately).

TIMER SELECTION SWITCH with 3 settings you can select:

- Continuous On \*
- 2 Hour Duration (2H)
- 4 Hour Duration (4H)

\*It is recommended to use this setting sparingly in order to conserve battery power unless using Power Adapter 5V 150mA (AQ51000) or USB connector.

Use 2 AA batteries, always match polarity when inserting into battery compartment



## 7. Maintenance

- Perform a 25% water change monthly (more frequently if necessary depending on number of fish and amount of daily feedings), use a vacuum gravel siphon to remove uneaten food and waste buildup.
- Always add a tap water conditioner to remove chemicals that can be harmful to you fish when adding water.
- Allow the water to sit overnight to acclimate to room temperature.
- Do not overfeed, only feed small amounts and what your fish will eat in 3 minutes.
- Don't overcrowd and add too many fish. This fish tank can accommodate one to two fish.

## 8. Adding New Fish

- Float the bag with your fish on the surface of the aquarium for 15 minutes.
- Open the bag containing your new fish, taking care that the bag does not collapse, and add a small amount of aquarium water every two minutes directly to bag.
- Continue this process for 10 minutes, allowing the bag to fill with water.
- Take the bag with fish to sink and gently scoop fish out with a net or pour bag of water into net.
- Gently place fish into aquarium. Do not add water from fish bag in order to prevent introduction of possible disease or parasites from store water.